

**FRANKLIN CENTRAL SCHOOL
REGULAR BOARD OF EDUCATION MEETING
April 20, 2022
5:30 p.m. Executive Session, 6:30 p.m. Open Session
Room 206**

IN ATTENDANCE – Stanley Swears, President
Patricia Taggart, Vice President
Joan Cronauer, Board Member
Jamie Archibald, Board Member
Kelly Kingsbury, Board Member
Bonnie Johnson, Superintendent
Kellie Renwick, Business Manager

Absent: 0
Staff: Brendan Coyle, Star Banner
Students: 0
Visitors: Amanda Groff, Christina Elmendorf, Brian Elmendorf, Shanna Boning, Chris Boning, Danielle Kehoe

President Swears called the meeting to order at 5:30 p.m.

Everyone stood for the pledge of allegiance

EXECUTIVE SESSION

Upon Motion of Taggart, seconded by Kingsbury and carried ayes 4, nays 0, the Board of Education went into Executive Session at 5:30 p.m. to discuss particular persons and special education report.

Jamie Archibald went into executive session at 5:35 p.m.

The board came out of Executive Session at 6:28 p.m.

MINUTES

By consent agenda, upon motion by Archibald, seconded by Kingsbury and carried ayes 5, nays 0, upon the recommendation of the Superintendent, the Board of Education does hereby approve to approve the regular and special meeting minutes as follows:

Resolved, upon the recommendation of the Superintendent, the Board of Education of the Franklin Central School District does hereby approve Regular Meeting Minutes – March 10, 2022, as submitted.

Resolved, upon the recommendation of the Superintendent, the Board of Education of the Franklin Central School District does hereby approve Special Meeting Minutes – March 28, 2022, as submitted.

Resolved, upon the recommendation of the Superintendent, the Board of Education of the Franklin Central School District does hereby approve Regular Meeting Minutes – April 7, 2022, as submitted.

TREASURER'S REPORT

Mrs. Renwick reported the following to the board:

- Presented a proposed budget for 2022-2023 school year and answered a few questions.

Resolved, upon the recommendation of the Superintendent, upon motion by Archibald, seconded by Taggart and carried ayes 5, nays 0, the Board of Education of the Franklin Central School District does hereby Accept Treasurer's Report for March 2022, as submitted – Resolution #21-206

Resolved, upon the recommendation of the Superintendent, upon motion by Taggart, seconded by Cronauer and carried ayes 5, nays 0, the Board of Education of the Franklin Central School District does hereby Accept Extra Curricular Report for March 2021, as submitted – Resolution #21-207

Resolved, upon the recommendation of the Superintendent, upon motion by Taggart, seconded by Archibald and carried ayes 5, nays 0, the Board of Education of the Franklin Central School District does hereby accept Monthly Claim's Auditor's Report, as submitted – Resolution #21-208

SUPERINTENDENT REPORT

Mrs. Johnson reported the following to the board:

- Mr. Coyle gave a Principal's report providing an update to the behavioral plan.
- Spring sports are in full swing. We are sharing transportation with Unatego for modified sports.
- There is a Summer Enrichment Plan to be at FCS if there is enough staff or student interest. If there is not enough interest, Sidney CSD has offered for our students to go to their program but Franklin would need to provide staff in order to accommodate the increase in students.
- Unatego is offering grades 6-11 Drama Club this summer to Franklin students.
- Mrs. Wood's art class submitted student art work to the Catskill Review. Several FCS students were selected and had their work published in the book.
- For Earth Day, Mrs. Wood's art class and Miss Fowler's science class worked together to create Earth Day posters.
- Mayor Briggs is again working with the 8th grade students to finish planting trees in the community.

- Mr. Laing took students in his Franklin History class over to the Train Museum.
- On May 6th we will have our Senior Class breakfast at the Otesaga Restaurant.
- 10th graders will be taking the ASVAB test on May 6th.
- The cafeteria has been repainted and looks beautiful.

NEW BUSINESS

Resolved, upon the recommendation of the Superintendent, upon motion by Archibald, seconded by Kingsbury and carried ayes 5, nays 0, the Board of Education of the Franklin Central School District does hereby approve Special Education Report, as submitted for the following students:

For the 2021-2022 school year:

The following was a CSE Manifestation:

Student #10318

The following was a CSE initial review:

Student #10871 Student #210054 Student #10908

For the 2022-2023 school year:

The following were a CSE annual review:

Student #210082 Student #10415 Student #10787 Student #210031 Student #10423

The following was a 504 annual review:

Student #10472 Student #10357

The following was a CSE reevaluation/annual review:

Student #10318

-Resolution #21-209

By consent agenda, upon motion by Taggart, seconded by Archibald and carried ayes 5, nays 0, upon the recommendation of the Superintendent, the Board of Education does hereby approve to approve Resolutions 21-210 through 21-214.

BE IT RESOLVED, by the Board of Education of Franklin Central School District, Delaware County, New York, as follows:

Section 1. The proposition hereinafter set forth is hereby authorized to be submitted for the approval of the qualified voters at the annual school district election to be held in said School District, on the 17th day of May 2022.

Section 2. The School District Clerk is hereby authorized and directed to include as a part of the notice of the annual district meeting and election notice with reference to the submission of said proposition in substantially the following form:

* * * * *

NOTICE IS HEREBY FURTHER GIVEN that at said annual election to be held on May 17, 2022, the following proposition will be submitted:

PROPOSITION

Shall the following resolution be adopted, to wit:

Shall the Board of Education establish a capital reserve fund under the provisions of Education Law§3651(1)? The purpose of the fund is for construction, repair and reconstruction of capital improvements and the acquisition of equipment. The ultimate amount of the fund shall be \$1,000,000.00 (one million dollars). The probable term shall be twenty years. The source from which funds will be obtained can include any or all of the following: Unappropriated fund balances from the general fund as determined by the Board of Education; State Aid related to expenditures from the capital reserve fund; interest income related to investment of monies in the fund; and any other additional monies thereafter authorized by the voters of the District.

* * * * *

Section 3. This resolution shall take effect immediately

- Resolution #21-210

Resolved, upon the recommendation of the Superintendent, the Board of Education of the Franklin Central School District does hereby approve proposed Budget and Property Tax Report Card in the amount of \$8,067,691 to be on the ballot May 17, 2022 for the 2022-2023 school year, as submitted – Resolution #21-211

BE IT RESOLVED, that the Franklin Central School District Board of Education, hereby declares the Franklin Central School District as the Lead Agency for purposes of the State Environmental Quality Review Act and regulations (SEQRA), associated with the 2023 Small Capital Project – Resolution #21-212

WHEREAS, the Franklin Central School District Board of Education (the “Board”) has considered the effect upon the environment of the proposed 2023 Small Capital Project listed in the State Environmental Quality Review Act Process Record Sheet submitted at this meeting, and

WHEREAS, the Board has received and reviewed the State Environmental Quality Review Act Process Record Sheet prepared and submitted in connection with the Project, now therefore

BE IT RESOLVED, that the Franklin Central School District Board of Education, acting as Lead Agency for purposes of the State Environmental Quality Review Act and regulations (SEQRA), hereby determines that the Project is a Type II action which will not have a significant impact on the environment and is not subject to review under SEQRA – Resolution #21-213

Resolved, upon the recommendation of the Superintendent, the Board of Education of the Franklin Central School District does hereby approve the proposed Delaware-Chenango-Madison-Otsego BOCES Administrative Budget for 2022-2023 school year in the amount of \$2,682,431- Resolution #21-214

Resolved, upon the recommendation of the Superintendent, upon motion by Archibald, seconded by Taggart and carried 5 ayes, 0 nays, the Board of Education of the Franklin Central School

District does hereby cast a total of three votes, one vote for each vacancy (3 vacancies) to be filled for the DCMO Board of Cooperative Education Services as follows:

1. **Jeanne Shields**
459 Keach Rd X
Guilford, NY 13780
Bainbridge-Guilford Central School
2. **John Klockowski**
155 Thompson Creek Rd X
Norwich, NY 13815
Norwich City Schools
3. **David Cruikshank**
117 Joe Rd X
North Pitcher, NY 13124
Otselic Valley Central School

- Resolution #21-215

By consent agenda, upon motion by Archibald, seconded by Cronauer and carried ayes 5, nays 0, upon the recommendation of the Superintendent, the Board of Education does hereby approve Resolutions 21-216 through 21-221.

Resolved, upon the recommendation of the Superintendent, the Board of Education of the Franklin Central School District does hereby authorize BOCES to award bids on the behalf of Franklin CSD for the 2022-2023 school year, see follows:

WHEREAS,

The Cooperative Purchasing Service is a plan of a number of public-school districts in the Delaware-Chenango-Madison-Otsego BOCES Area in New York, to bid jointly equipment, supplies and contract items, and

WHEREAS,

The Central School named below is desirous of participating with other districts in the Delaware-Chenango-Madison-Otsego BOCES in the joint bidding of the items mentioned above as authorized by General Municipal Law, Section 119-o, and

WHEREAS,

The Central School named below wishes to appoint the Delaware-Chenango-Madison-Otsego BOCES to advertise for bid, accept, tabulate bids and award bids on their behalf; therefore

BE IT RESOLVED,

That the Board of Education of the Central School listed below hereby appoints the Delaware-Chenango-Madison-Otsego BOCES to represent it in all matters relating above, and designates the Evening Sun Newspaper as the legal publication for all Cooperative Purchasing bid notifications, and,

BE IT FURTHER RESOLVED,

That the Board of Education of the Central School listed below authorizes the Delaware-

Chenango-Madison-Otsego BOCES to represent it in all matters leading up to the entering into a contract for the purchase of the above-mentioned commodities, and,
BE IT FURTHER RESOLVED,

That the Board of Education of the Central School listed below agrees to (1) assume its equitable share of the costs of the Cooperative Bidding; (2) abide by majority decisions of the participating districts; (3) abide by the Award of the BOCES Board; (4) and that after the award of the bid it will conduct all negotiations directly with the successful bidder(s).

- Resolution #21-216

Resolved, upon the recommendation of the Superintendent, the Board of Education of the Franklin Central School District does hereby authorize BOCES to act in the behalf of the districts in the preparation, advertising, and tabulation of bids but specifies that bids are to be awarded by the individual districts' Board of Education based on the information supplied by BOCES,

WHEREAS,

It is a plan of a number of public school districts in the Delaware-Chenango-Madison-Otsego BOCES Area in New York, to bid jointly equipment, supplies and contract items, and

WHEREAS,

The Central School named below is desirous of participating with other districts in the Delaware-Chenango-Madison-Otsego BOCES Area in the joint bidding of the items mentioned above as authorized by General Municipal Law, Section 119-o, and

WHEREAS,

The Central School named below wishes to appoint a committee made up of participating schools to assume the responsibility for drafting of specifications, advertising for bids, accepting and opening bids, tabulating bids and providing the information to their Board of Education who will make the awards; therefore

BE IT RESOLVED,

That the Board of Education of the Central School listed below hereby appoints the Delaware-Chenango-Madison-Otsego BOCES to represent it in all matters relating above, and designates the Evening Sun Newspaper as the legal publication for all Cooperative Purchasing bid notifications and,

BE IT FURTHER RESOLVED,

That the Board of Education of the Central School listed below authorizes the above committee to represent it in all matters leading up to the entering into a contract for the purchase of the above mentioned items, and,

BE IT FURTHER RESOLVED,

That the Board of Education of the Central School listed below agrees to (1) abide by majority decisions of the participating districts on quality standards; (2) that it will award contracts based on information provided from the bid; (3) and that after the award of the bid it will conduct all negotiations directly with the successful bidder(s).

-Resolution #21-217

Resolved, upon the recommendation of the Superintendent, the Board of Education of the

Franklin Central School District does hereby appoint a committee to act in the districts' behalf and for the district to abide by the committee recommendations and award of bids

WHEREAS,

It is a plan of a number of public school districts in the Delaware-Chenango-Madison-Otsego BOCES Area in New York, to bid jointly Cafeteria supplies including but not limited to food and paper items, and

WHEREAS,

The Central School named below is desirous of participating with other districts in the Delaware-Chenango-Madison-Otsego BOCES Area in the joint bidding of the commodities mentioned above as authorized by General Municipal Law, Section 119-o, and

WHEREAS,

The Central School named below wishes to appoint a committee made up of participating schools to assume the responsibility for drafting of specifications, advertising for bids, accepting and opening bids, tabulating bids and awarding bids and reporting the results to the schools; therefore;

BE IT RESOLVED,

That the Board of Education of the Central School listed below hereby appoints the Delaware-Chenango-Madison-Otsego BOCES to represent it in all matters relating above, and designates the Evening Sun Newspaper as the legal publication for all Cooperative Purchasing bid notifications, and,

BE IT FURTHER RESOLVED,

That the Board of Education of the Central School listed below authorizes the above committee to represent it in all matters leading up to the entering into a contract for the purchase of the above mentioned commodities, and,

BE IT FURTHER RESOLVED,

That the Board of Education of the Central School listed below agrees to (1) assume its equitable share of the costs of the Cooperative Bidding; (2) abide by majority decisions of the participating districts on quality standards; (3) that it will award contracts according to the recommendations of the committee; (4) and that after the award of the bid it will conduct all negotiations directly with the successful bidder(s).

-Resolution #21-218

Resolved, upon the recommendation of the Superintendent, the Board of Education of the Franklin Central School District does hereby approve Stanley Swears as Permanent Chairman for the May 5, 2022 Public Hearing and the May 17, 2022 Special Meeting (Budget Vote) - Resolution #21-219

Resolved, upon the recommendation of the Superintendent, the Board of Education of the Franklin Central School District does hereby appoint Delaware County Board of Election Inspectors for the May 17, 2022, as follows:

Chief Election Inspector: Eileen Olmesdahl
Election Inspector: Linda Buel

- Resolution #21-220

Resolved, upon the recommendation of the Superintendent, the Board of Education of the Franklin Central School District does hereby declare Butterfly Machine (FCSD #001093) as Surplus – Resolution #21-221

PERSONNEL

By consent agenda, upon motion by Taggart, seconded by Cronauer and carried ayes 5, nays 0, upon the recommendation of the Superintendent, the Board of Education does hereby approve Resolutions 21-222 through 21-226, with regret and many thanks to Jayne Bolton and Mary Lou Miller.

Resolved, upon the recommendation of the Superintendent, the Board of Education of the Franklin Central School District does hereby appoint Donna Dean as an Election Inspector for the May 17, 2022 Budget Vote – Resolution #21-222

Resolved, upon the recommendation of the Superintendent, the Board of Education of the Franklin Central School District does hereby appoint Brendan Coyle as a Substitute CSE/CPSE Chairperson, effective March 11, 2022 – Resolution #21-223

Resolved, upon the recommendation of the Superintendent, the Board of Education of the Franklin Central School District does hereby accept Francesca Parry's Letter of Resignation, effective June 30, 2022 – Resolution #21-224

Resolved, upon the recommendation of the Superintendent, the Board of Education of the Franklin Central School District does hereby accept Jayne Bolton's Letter of Resignation for the purpose of Retirement, effective June 30, 2022 – Resolution #21-225

Resolved, upon the recommendation of the Superintendent, the Board of Education of the Franklin Central School District does hereby accept Mary Lou Miller's Letter of Resignation, effective June 30, 2022 – Resolution #21-226

PRIVILEGE OF THE FLOOR

The Board of Education welcomes and encourages input from the public at Board meetings. Please note that neither the Board nor Administration may engage in a dialogue or respond to questions concerning personnel or student matters. This is not an attempt to restrict public comment, but is done to protect the privacy of the individuals involved as required by law. As a matter of courtesy to others in attendance, comments of individuals/groups should be limited to three to five (3-5) minutes.

Amanda Groff addressed the Board of Education.
Chris Boning addressed the Board of Education.
Shanna Boning addressed the Board of Education.
Brad Taggart addressed the Board of Education.
Chris Elmendorf addressed the Board of Education.

EXECUTIVE SESSION (if needed)

ADJOURNMENT

Upon motion by Archibald, seconded by Taggart and carried ayes 5, nays 0, the Board of Education adjourned at 7:22 p.m.

Donna M. Dean, District Clerk

APPROVED

TREASURER'S MONTHLY REPORT TO
BOARD OF EDUCATION
FRANKLIN CENTRAL SCHOOL

GENERAL FUND

BALANCE ON HAND: March 1, 2022 \$435,200.72
VOID CHECK(S)

RECEIPTS:

GENERAL FUND MONTHLY INTEREST		\$32.08
Section 4 Fees	13449	\$1,007.00
Book Fair & Petty Cash	JE#151 & 13450	\$2,261.54
FCEF-4th Grade & Guidance	13451	\$705.00
Record State Aid	JE#141	\$89,819.00
Record State Aid	JE#146	\$22,037.00
Record State Aid	JE#149	\$792,265.75
Record State Aid & REAP Grant	JE#152	\$24,743.37
Record State Aid	JE#153	\$450,918.56
Record State Aid	JE#155	\$300,867.25

TOTAL RECEIPTS \$1,684,656.55

RECEIPTS & BALANCE \$2,119,857.27

DISBURSEMENTS:

CHECKS	48843-48893	\$259,266.26
WIRES JE#		\$1,667,075.94

TOTAL DISBURSEMENTS \$1,926,342.20

BALANCE ON HAND March 31, 2022

FINAL BALANCE \$193,515.07
=====

BANK BALANCE

LESS: OUTSTANDING CHECKS	\$193,964.00
PLUS: Bank Deposit in Transit	\$448.93
LESS: Bank Error	\$0.00
	\$0.00

NET BALANCE IN BANK

\$193,515.07
=====

April 20, 2022
DATE SUBMITTED


DISTRICT TREASURER

TREASURER'S MONTHLY REPORT TO
BOARD OF EDUCATION
FRANKLIN CENTRAL SCHOOL

CAPITAL FUND

BALANCE ON HAND:	<u>March 1, 2022</u>				\$39,174.91
RECEIPTS:					
CAPITAL FUND INTEREST		\$1.66			
			TOTAL RECEIPTS		\$1.66
			RECEIPTS & BALANCE		\$39,176.57
TOTAL DISBURSEMENTS:					
JE		\$0.00			
Check		\$0.00			
			TOTAL DISBURSEMENTS		\$0.00
			FINAL BALANCE		<u>\$39,176.57</u>
BALANCE ON HAND	<u>March 31, 2022</u>				=====

BANK BALANCE		\$39,176.57
LESS: OUTSTANDING CHECKS /Transfer		\$0.00
PLUS: IN TRANSIT DEPOSITS		\$0.00
NET BALANCE IN BANK		<u>\$39,176.57</u>
		=====

April 20, 2022
DATE SUBMITTED


DISTRICT TREASURER

TREASURER'S MONTHLY REPORT TO
BOARD OF EDUCATION
FRANKLIN CENTRAL SCHOOL

FEDERAL FUND

BALANCE ON HAND: March 1, 2022 \$8,239.08

RECEIPTS:

Record Loan from Gen to Spec Et	JE#140	\$10,000.00
Record Trans from Gen To Spec E	JE#157	\$10,000.00

TOTAL RECEIPTS \$20,000.00

RECEIPTS & BALANCE \$28,239.08

TOTAL DISBURSEMENTS:

CHECKS	7865-7866	\$15,663.00
WIRES/JE		\$0.00

TOTAL DISBURSEMENTS \$15,663.00

BALANCE ON HAND March 31, 2022 FINAL BALANCE \$12,576.08

BANK BALANCE	\$12,576.08
LESS: OUTSTANDING CHECKS	\$0.00
Add Check	\$0.00
PLUS: IN TRANSIT DEPOSITS	\$0.00

NET BALANCE IN BANK \$12,576.08

April 20, 2022
DATE SUBMITTED


DISTRICT TREASURER

BOARD OF EDUCATION
FRANKLIN CENTRAL SCHOOL

TRUST & AGENCY

BALANCE ON HAND: March 1, 2022 \$15,294.64

RECEIPTS:

Gen Fund-March Benef	#54618	\$84,707.59
Extra Curricular-Sales	JE#145-54619	\$404.92
Retiree Payments	#54620-54624	\$544.00
Record Payroll & relate	JE#147	\$146,386.02
Record Payroll & relate	JE#150	\$145,103.59

TOTAL RECEIPTS \$377,146.12

RECEIPTS & BALANCE \$392,440.76

TOTAL DISBURSEMENTS:

CHECKS	19442-19454	\$105,835.78
WIRES	968-978	\$270,884.90
JE#		\$397.71

TOTAL DISBURSEMENTS \$377,118.39

FINAL BALANCE \$15,322.37

BALANCE ON HAND March 31, 2022

BANK BALANCE	\$17,304.84
LESS: OUTSTANDING CHECKS	\$1,982.47
Bank Error	\$0.00
PLUS: DEPOSIT IN TRANSIT	\$0.00
NET BALANCE IN BANK	\$15,322.37

April 20, 2022
DATE SUBMITTED


DISTRICT TREASURER

TREASURER'S MONTHLY REPORT TO
BOARD OF EDUCATION
FRANKLIN CENTRAL SCHOOL

SCHOOL LUNCH FUND

BALANCE ON HAND: March 1, 2022 \$9,910.40

RECEIPTS:

Record March 2022 Online Deposits	JE#158	\$445.00
Record Café deposits	JE#159	\$1,025.40

TOTAL RECEIPTS \$1,470.40

RECEIPTS & BALANCE \$11,380.80

TOTAL DISBURSEMENTS:

CHECKS	6045-6049	\$0.00
JE #		\$5,286.83
		\$0.00

CHECKS \$5,286.83

BALANCE ON HAND March 31, 2022 FINAL BALANCE \$6,093.97

BANK BALANCE	\$6,093.97
LESS: OUTSTANDING CHECKS	\$0.00
PLUS: Bank Deposit in Transit	\$0.00
LESS: Bank Error	\$0.00
NET BALANCE IN BANK	\$6,093.97

April 20, 2022
DATE SUBMITTED


DISTRICT TREASURER

FRANKLIN CENTRAL SCHOOL TREASURER'S REPORT

31-Mar-22

	GENERAL FUND	GENERAL SAVINGS	Capital Reserve	GENERAL RETIRE RSV	EMPLOYEE BENEFIT RES	DEBT SRVC RES	CAFETERIA FUND	FEDERAL FUND	CAPITAL FUND	TRUST & AGENCY	PAYROLL FUND
BEGINNING BALANCE	\$435,200.72	\$192,907.69	\$185,711.36	\$157,519.90	\$183,945.81	\$232,985.43	\$9,910.40	\$8,239.08	\$39,174.91	\$15,294.64	\$0.00
RECEIPTS	\$1,684,656.55	\$1,500,009.12	\$7.89	\$6.69	\$7.81	\$9.89	\$1,470.40	\$20,000.00	\$1.66	\$377,146.12	5452.12
DISB	\$1,926,342.20	\$145,103.59	\$0.00	\$0.00	\$0.00	\$0.00	\$5,286.83	\$15,663.00	\$0.00	\$377,118.39	\$5,452.12
ENDING BALANCE	\$193,515.07	\$1,547,813.22	\$185,719.25	\$157,526.59	\$183,953.62	\$232,995.32	\$6,093.97	\$12,576.08	\$39,176.57	\$15,322.37	\$0.00

I CERTIFY THAT THE BALANCES FOR THE FUNDS ABOVE ARE ACCURATE
AND IN AGREEMENT WITH BANK STATEMENTS AS RECONCILED.

Kathie Renwick

**FRANKLIN CENTRAL SCHOOL
ACTUAL EXPENDITURES
FOR THE FISCAL YEAR 2021-22**

	JULY	AUGUST	SEPT	OCT	NOV	DEC	JAN	FEB	MAR	BUDGET
A1 PAYROLL	\$101,573	\$83,533	\$231,462	\$237,048	\$238,980	\$339,500	\$213,347	\$253,474	\$222,675	\$3,072,395
A8 BENEFITS	\$171,485	\$76,831	\$115,770	\$184,197	\$150,477	\$101,777	\$79,055	\$100,924	\$104,356	\$1,901,742
A49 BOCES	\$0	\$1,414	\$140,209	\$128,090	\$126,683	\$138,421	\$136,333	\$135,375	\$138,014	\$1,412,223
A7 DEBT SERVICE	\$149,471	\$0	\$0	\$8,100	\$0	\$144,848	\$0	\$0	\$0	\$803,570
A2 EQUIPMENT	\$5,660	\$3,399	\$140	\$2,503	\$820	\$0	\$0	\$672	\$2,154	\$29,000
A40 CONTRACTUAL	\$96,291	\$99,509	\$50,253	\$58,373	\$18,983	\$28,373	\$24,024	\$30,793	(\$43,469)	\$379,850
A45 SUPPLIES	\$14,495	\$7,611	\$3,597	\$21,199	\$16,528	\$9,040	\$10,220	\$14,167	\$5,782	\$175,350
A46 SOFTWARE	\$4,024	\$0	\$0	\$2,759	\$200	\$474	\$60	\$1,230	\$0	\$11,700
A47 TUITION	\$0	\$0	\$0	\$6,220	\$6,220	\$6,220	\$0	\$12,439	\$5,219	\$0
A48 TEXTBOOKS	\$2,251	\$9,745	\$478	\$3,874	\$153	\$139	\$270	\$263	\$0	\$25,000
TRANSFER TO CAFETERIA	\$0	\$0	\$0	\$0	\$0	\$0	\$0	\$0	\$0	\$20,000
TRANSFER TO SPECIAL AID	\$0	\$0	\$0	\$0	\$0	\$0	\$7,545	\$0	\$0	\$0
0.9 TRANSFER TO CAPITAL	\$100,000	\$0	\$0	\$0	\$0	\$0	\$0	\$0	\$0	\$100,000
TOTAL EXPENDITURES	\$645,250	\$282,042	\$541,909	\$652,362	\$559,044	\$768,791	\$470,853	\$549,339	\$434,731	\$7,930,830

**FRANKLIN CENTRAL SCHOOL
EXPENDABLE TRUST REPORT
As of March 31, 2022**

Balance on Hand, Feb 28, 2022

\$ 244,463.35Receipts:

Interest on money market account

\$ 29.51

Benevolent fund

\$ 18.74

Total Receipts

\$ 48.25Disbursements

None this month

\$ -

Total Disbursements

\$ -

Balance on Hand, March 31, 2022

\$ 244,511.60Bank Reconciliation:

Bank balance, March 31, 2022 Money Market account

\$ 65,615.16

Bank Balance, March 31, 2022 Certificate of Deposit

\$ 178,896.44

Deduct: Outstanding checks

\$ -

Add: Deposits in transit

\$ -

Balance on Hand, Feb 28, 2022

\$ 244,511.60

Submitted April 20, 2022

*Kellie Renwick*Kellie Renwick
District Treasurer

FRANKLIN CENTRAL SCHOOL
EXTRACURRICULAR ACCOUNT
MARCH 2022

ACTIVITIES	EQUITY 3/1/2022	CASH RECEIPTS	CASH DISB	EQUITY 3/31/2022
BAND	2421.49			2421.49
CHORUS	175.19			175.19
CLASS OF 2021	0.00			0.00
CLASS OF 2022	1143.88			1143.88
CLASS OF 2023	2370.89	1987.65	20.00	4338.54
CLASS OF 2024	4424.27		1081.10	3343.17
CLASS OF 2025	1026.50	558.00	300.00	1284.50
CLASS OF 2026	314.50			314.50
CLASS OF 2027	200.00			200.00
ELEM. DRAMA CLUB	1967.41			1967.41
HS- DRAMA CLUB	845.16	301.00		1146.16
FORENSICS	1541.03			1541.03
LANGUAGE CLUB	1025.78			1025.78
LEADERS CLUB	763.31			763.31
LIBERANNI	14757.46	140.00		14897.46
NHS	395.68			395.68
SADD	2242.31			2242.31
SKI CLUB	170.27			170.27
STUDENT COUNCIL	1392.31	394.55	340.02	1446.84
VARSITY CLUB	5322.62			5322.62
Sales Taxes Collected	0.00			0.00
TOTAL	42500.06	3381.20	1741.12	44140.14

ADD OUTSTANDING CHECKS

6997	300.00
6998	340.02
6999	20.00

Total 660.02 **44800.16**

DEDUCT DEPOSITS IN TRANSIT

0.00 **44800.16**

BALANCE PER BANK - CHECKING


31926.10


- SAVINGS

12874.06

TOTAL

44800.16


Debra L. Valentine
Extracurricular Treasurer


Bonnie Johnson
Superintendent

as of 3 /31/22

3-30-22

Checks

Address Diff. on WARRANT FROM INV.	CHANGE ADDRESS to to MATCH WARRANT.	corrected @ 3/31/22
NO INV. OR P.O. # GO WARRANT	ADD A WARRANT OR P.O. #	corrected @ 3/31/22

672
FIRST UNION
LIFE INS.
3624
HARTFORD.

3-30-22 Vicki Slicker Internal Claims Auditor.

3-15-22

Checks

Item	Information for Corrective Action	Corrective Action Taken

3-15-22 Vicky Sickler Internal Claims Auditor
NO CORRECTIONS NEEDED!

Delaware Literary Institute



P.O. Box 888
Franklin, N.J.
13775

Franklin Central School

Main Office 607-829-3551
Guidance Office 607-829-2095
Elementary Office 607-829-3025
FAX # 607-829-2101

To: Board of Education Members/ Bonnie Johnson, Superintendent

From: Star Banner/ Chairperson of Special Education

Re: Recommendations Regarding Students with Disabilities

Date: April 21, 2022

The following was reviewed by the CSE/CPSE committee. The recommendations of the Committee regarding each student are set forth at the end of the committee recommendations, which are attached. The tests, reports or other information upon which the recommendations are based are included.

I hope that this information assists the Board in preparing its agenda to review these recommendations. If there is anything further that may be needed regarding any of these recommendations, please let me know.

For the 2021-2022 school year:

The following was a CSE Manifestation:

Student # 10318

The following was a CSE initial review:

Student # 10871 Student # 210054 Student # 10908

For the 2022-2023 school year:

The following were a CSE annual review:

Student # 210082 Student # 10415 Student # 10787 Student # 210031 Student # 10423

The following was a 504 annual review:

Student # 10472 Student # 10357

The following was a CSE reevaluation/annual review:

Student # 10318

Board of Education Action: ☒ Approved ☐ Disapproved ☐ Modifications
Signature, Board of Education Designee Starly Swann Date 4/20 2022

Committee Recommendations for Board of Education Review with Details (April 21, 2022)

Meeting	BOE Date	Alt ID#	Age	Committee Grade	Reason	Decision	Disability	Recommended School
03/22/2022	04/20/2022	210082	10:5	Sub CSE	Ungraded Annual Review	Classified	Intellectual Disability	Harrold Campus BOCES
Recommended Program/Service								
Special Class				Start Date	End Date	Ratio	Freq.Period	Duration
				09/06/2022	06/23/2023	12:1+1	1	Daily 4 hrs 40 mins
Occupational Therapy				09/06/2022	06/23/2023	Small Group	1	Weekly 30 mins
Speech/Language Therapy				09/06/2022	06/23/2023	Small Group	2	Weekly 30 mins
Special Class				07/11/2022	08/19/2022	12:1+1	1	Daily 4 hrs
Occupational Therapy				07/11/2022	08/19/2022	Small Group	1	Weekly 30 mins
Speech/Language Therapy				07/11/2022	08/19/2022	Small Group	1	Weekly 30 mins
Previous Program/Service								
Special Class				Start Date	End Date	Ratio	Freq.Period	Duration
				09/07/2021	06/22/2022	12:1+1	1	Daily 4 hrs 40 mins
Occupational Therapy				09/07/2021	06/22/2022	Small Group	1	Weekly 30 mins
Speech/Language Therapy				09/07/2021	06/22/2022	Small Group	2	Weekly 30 mins
Special Class				07/05/2021	08/13/2021	12:1+1	1	Daily 4 hrs
Occupational Therapy				07/05/2021	08/13/2021	Small Group	1	Weekly 30 mins
Speech/Language Therapy				07/05/2021	08/13/2021	Small Group	2	Weekly 30 mins
Decision Based on:								
Report Name								
				Date	Evaluator			
Current Evals., progress notes, teacher reports				4/29/2021				
Occupational Therapy Progress Summary				4/29/2021				
Parent Report and Observations				4/29/2021				
Psychological Evaluation and Social History				4/29/2021				
School Attendance Record				4/29/2021				
Speech Therapy Summary				4/29/2021				
Teacher Report				4/29/2021				
Psychological Evaluation				3/17/2020				
04/06/2022	04/21/2022	10318	15:9	Section 504	11	Reevaluation/Annual	Section 504	Limited Major Life Franklin Central School Senior

Activity High

Review

<u>Recommended Program/Service</u>	<u>Start Date</u>	<u>End Date</u>	<u>Ratio</u>	<u>Freq.</u>	<u>Period</u>	<u>Duration</u>
Consultant Teacher Services	09/06/2022	06/23/2023	Indirect	1	Weekly	38 mins
Consultant Teacher Services	09/06/2022	06/23/2023	Indirect	1	Weekly	38 mins
Consultant Teacher Services	09/06/2022	06/23/2023	Indirect	1	Weekly	38 mins
Consultant Teacher Services	09/06/2022	06/23/2023	Indirect	1	Weekly	38 mins
Counseling	09/06/2022	06/23/2023	Individual 2	Monthly	30 mins	
<u>Previous Program/Service</u>	<u>Start Date</u>	<u>End Date</u>	<u>Ratio</u>	<u>Freq.</u>	<u>Period</u>	<u>Duration</u>
Consultant Teacher Services	04/04/2022	06/24/2022	Indirect	5	Weekly	38 mins
Consultant Teacher Services	04/04/2022	06/24/2022	Indirect	5	Weekly	38 mins
Consultant Teacher Services	04/04/2022	06/24/2022	Indirect	5	Weekly	38 mins
Consultant Teacher Services	04/04/2022	06/24/2022	Indirect	5	Weekly	38 mins
Counseling	04/04/2022	06/24/2022	Individual 2	Monthly	30 mins	

Decision Based on:

<u>Report Name</u>	<u>Date</u>	<u>Evaluator</u>
Psychoeducational Evaluation	4/1/2022	
Social History	3/17/2019	
Psychoeducational Evaluation	3/15/2019	
Medical Health Records	8/28/2018	
Occupational Therapy Progress Summary	2/14/2017	
Psychoeducational Evaluation	5/31/2016	

04/06/2022	04/21/2022	10472	14:0	Section 504	09	Reevaluation/Annual Review	Section 504	Limited Major Life Activity	Franklin Central School Senior High
------------	------------	-------	------	-------------	----	----------------------------	-------------	-----------------------------	-------------------------------------

Decision Based on:

<u>Report Name</u>	<u>Date</u>	<u>Evaluator</u>
Psychoeducational Review	4/4/2022	
Occupational Therapy Progress Summary	2/13/2017	
Physical Therapy Progress Summary	2/13/2017	
Psychoeducational Evaluation	4/11/2016	

04/07/2022	04/21/2022	10415	13:11	Sub CSE	09	Annual Review	Classified	Learning Disability	Franklin Central School Senior High
------------	------------	-------	-------	---------	----	---------------	------------	---------------------	-------------------------------------

<u>Recommended Program/Service</u>	<u>Start Date</u>	<u>End Date</u>	<u>Ratio</u>	<u>Freq.</u>	<u>Period</u>	<u>Duration</u>
Consultant Teacher Services	09/06/2022	06/23/2023	Direct	5	Weekly	38 mins
Consultant Teacher Services	09/06/2022	06/23/2023	Indirect	1	Weekly	38 mins
Resource Room Program	09/06/2022	06/23/2023	group	4	Weekly	38 mins
Special Class - Language Arts	09/06/2022	06/23/2023	15:1	5	Weekly	38 mins
Counseling	09/06/2022	06/23/2023	Small Group	2	Monthly	30 mins
<u>Previous Program/Service</u>	<u>Start Date</u>	<u>End Date</u>	<u>Ratio</u>	<u>Freq.</u>	<u>Period</u>	<u>Duration</u>
Consultant Teacher Services	09/07/2021	06/24/2022	Indirect	1	Weekly	38 mins

Resource Room Program
Special Class - Language Arts
Special Class - Math
Counseling

Decision Based on:

<u>Report Name</u>	<u>Date</u>	<u>Evaluator</u>
Psychoeducational Evaluation	1/3/2022	

04/07/2022 04/21/2022 10787 17:2 Sub CSE 12 Annual Review Classified Learning Disability Harrold Campus BOCES

Recommended Program/Service

Consultant Teacher Services
Special Class
Psychological Counseling Services
Previous Program/Service
Consultant Teacher Services
Special Class
Psychological Counseling Services

Decision Based on:

<u>Report Name</u>	<u>Date</u>	<u>Evaluator</u>
Psychological Evaluation	3/31/2021	
Psychoeducational Evaluation	4/3/2018	

04/07/2022 04/21/2022 10423 13:9 Sub CSE 09 Annual Review Classified Other Health Impairment Franklin Central School Senior High

Recommended Program/Service

Consultant Teacher Services
Consultant Teacher Services
Counseling
Previous Program/Service
Consultant Teacher Services
Consultant Teacher Services
Counseling
Counseling

Decision Based on:

<u>Report Name</u>	<u>Date</u>	<u>Evaluator</u>
Psychoeducational Evaluation	12/8/2021	

04/07/2022 04/21/2022 210031 18:2 Sub CSE 12 Annual Review Classified Learning Disability Harrold Campus BOCES

Recommended Program/Service

Special Class
Previous Program/Service
Special Class

Psychological Counseling Services 09/08/2021 06/24/2022 Individual 1 Weekly 30 mins

Decision Based on:

<u>Report Name</u>	<u>Date</u>	<u>Evaluator</u>
Psychological Evaluation	2/16/2017	

Committee Recommendations for Board of Education Review with Details (April 21, 2022)

Meeting	BOE Date	Alt ID#	Age	Committee	Grade	Reason	Decision	Disability	Recommended School
03/22/2022	04/21/2022	10357	15:0	Section 504	10	Annual Review	Section 504	Limited Major Life Activity	Franklin Central School Senior High
<div> <div>Previous Program/Service</div> <div>Skilled Nursing Services</div> <div>Decision Based on:</div> </div> <div> <div>Report Name</div> <div>Psychoeducational Evaluation</div> <div>Medical Health Records</div> <div>Teacher Report</div> <div>Psychoeducational Review</div> </div> <div> <div>Start Date</div> <div>09/09/2020</div> <div>End Date</div> <div>06/25/2021</div> <div>Ratio</div> <div>Individual</div> <div>Freq.</div> <div>2</div> <div>Period</div> <div>Daily</div> <div>Duration</div> <div>15 mins</div> </div> <div> <div>Date</div> <div>1/29/2018</div> <div>3/21/2017</div> <div>3/21/2017</div> <div>2/14/2017</div> <div>Evaluator</div> </div>									
D/C end of school year June 2022									
03/30/2022	04/21/2022	10871	7:7	CSE	02	Initial Eligibility Determination Meeting	Classified	Learning Disability	Franklin Central School Elementary
<div> <div>Recommended Program/Service</div> <div>Consultant Teacher Services</div> <div>Consultant Teacher Services</div> <div>Resource Room Program</div> </div> <div> <div>Start Date</div> <div>04/01/2022</div> <div>End Date</div> <div>06/22/2022</div> <div>Ratio</div> <div>Direct</div> <div>Freq.</div> <div>5</div> <div>Period</div> <div>Weekly</div> <div>Duration</div> <div>38 mins</div> </div> <div> <div>Start Date</div> <div>04/01/2022</div> <div>End Date</div> <div>06/22/2022</div> <div>Ratio</div> <div>Direct</div> <div>Freq.</div> <div>5</div> <div>Period</div> <div>Weekly</div> <div>Duration</div> <div>38 mins</div> </div> <div> <div>Start Date</div> <div>04/01/2022</div> <div>End Date</div> <div>06/22/2022</div> <div>Ratio</div> <div>5:1</div> <div>Freq.</div> <div>5</div> <div>Period</div> <div>Weekly</div> <div>Duration</div> <div>30 mins</div> </div>									
Decision Based on:									
<div> <div>Report Name</div> <div>Psychoeducational Evaluation</div> <div>Classroom Observation</div> <div>Social History</div> <div>Medical Health Records</div> </div> <div> <div>Date</div> <div>3/25/2022</div> <div>2/8/2022</div> <div>2/2/2022</div> <div>12/16/2021</div> <div>Evaluator</div> </div>									
04/04/2022	04/21/2022	10318	15:9	CSE	10	Manifestation Determination	Classified	Learning Disability	Franklin Central School Senior High
<div> <div>Recommended Program/Service</div> <div>Consultant Teacher Services</div> <div>Consultant Teacher Services</div> <div>Consultant Teacher Services</div> <div>Consultant Teacher Services</div> <div>Counseling</div> </div> <div> <div>Start Date</div> <div>04/04/2022</div> <div>End Date</div> <div>06/24/2022</div> <div>Ratio</div> <div>Indirect</div> <div>Freq.</div> <div>5</div> <div>Period</div> <div>Weekly</div> <div>Duration</div> <div>38 mins</div> </div> <div> <div>Start Date</div> <div>04/04/2022</div> <div>End Date</div> <div>06/24/2022</div> <div>Ratio</div> <div>Indirect</div> <div>Freq.</div> <div>5</div> <div>Period</div> <div>Weekly</div> <div>Duration</div> <div>38 mins</div> </div> <div> <div>Start Date</div> <div>04/04/2022</div> <div>End Date</div> <div>06/24/2022</div> <div>Ratio</div> <div>Indirect</div> <div>Freq.</div> <div>5</div> <div>Period</div> <div>Weekly</div> <div>Duration</div> <div>38 mins</div> </div> <div> <div>Start Date</div> <div>04/04/2022</div> <div>End Date</div> <div>06/24/2022</div> <div>Ratio</div> <div>Indirect</div> <div>Freq.</div> <div>5</div> <div>Period</div> <div>Weekly</div> <div>Duration</div> <div>38 mins</div> </div> <div> <div>Start Date</div> <div>04/04/2022</div> <div>End Date</div> <div>06/24/2022</div> <div>Ratio</div> <div>Individual</div> <div>Freq.</div> <div>2</div> <div>Period</div> <div>Monthly</div> <div>Duration</div> <div>30 mins</div> </div>									
<div> <div>Previous Program/Service</div> <div>Consultant Teacher Services</div> <div>Consultant Teacher Services</div> <div>Consultant Teacher Services</div> </div> <div> <div>Start Date</div> <div>09/07/2021</div> <div>End Date</div> <div>04/04/2022</div> <div>Ratio</div> <div>Indirect</div> <div>Freq.</div> <div>5</div> <div>Period</div> <div>Weekly</div> <div>Duration</div> <div>38 mins</div> </div> <div> <div>Start Date</div> <div>09/07/2021</div> <div>End Date</div> <div>04/04/2022</div> <div>Ratio</div> <div>Indirect</div> <div>Freq.</div> <div>5</div> <div>Period</div> <div>Weekly</div> <div>Duration</div> <div>38 mins</div> </div> <div> <div>Start Date</div> <div>09/07/2021</div> <div>End Date</div> <div>04/04/2022</div> <div>Ratio</div> <div>Indirect</div> <div>Freq.</div> <div>5</div> <div>Period</div> <div>Weekly</div> <div>Duration</div> <div>38 mins</div> </div>									

Consultant Teacher Services
Resource Room Program
Counseling

09/07/2021 04/04/2022 Indirect 5 Weekly 38 mins
09/07/2021 12/06/2021 group 5 Weekly 38 mins
09/07/2021 04/04/2022 Individual 2 Monthly 30 mins

Decision Based on:

Report Name

Date Evaluator

Social History 3/17/2019
Psychoeducational Evaluation 3/15/2019
Medical Health Records 8/28/2018
Occupational Therapy Progress Summary 2/14/2017
Psychoeducational Evaluation 5/31/2016

04/05/2022 04/21/2022 210054 5:6 CSE Kdg. Initial Eligibility Determination Meeting Classified Learning Disability Franklin Central School Elementary

Recommended Program/Service

Consultant Teacher Services 04/18/2022 06/22/2022 Direct 5 Weekly 30 mins
Consultant Teacher Services 04/18/2022 06/22/2022 Direct 5 Weekly 30 mins
Speech/Language Therapy 04/18/2022 06/22/2022 Small Group 2 Weekly 30 mins

Decision Based on:

Report Name

Date Evaluator

Speech/Language Evaluation 3/31/2022
Psychological Evaluation 3/21/2022
Social History 3/21/2022
Classroom Observation 3/14/2022
Medical Health Records 2/14/2022

04/08/2022 04/22/2022 10908 7:0 CSE 01 Initial Eligibility Determination Meeting Classified Learning Disability Franklin Central School Elementary

Recommended Program/Service

Consultant Teacher Services 04/20/2022 06/22/2022 Direct 5 Weekly 30 mins
Consultant Teacher Services 04/20/2022 06/22/2022 Direct 5 Weekly 30 mins
Resource Room Program 04/20/2022 06/22/2022 5:1 1 Alternate days 20 mins
Occupational Therapy 04/20/2022 06/22/2022 Small Group 2 Weekly 30 mins
Speech/Language Therapy 04/20/2022 06/22/2022 Small Group 2 Weekly 30 mins
Previous Program/Service
Occupational Therapy 09/07/2021 06/22/2022 Small Group 2 Weekly 30 mins
Speech/Language Therapy 09/07/2021 06/22/2022 Small Group 2 Weekly 30 mins

Decision Based on:

Report Name

Date Evaluator

Psychoeducational Evaluation 3/29/2022
Social History 3/29/2022
Classroom Observation 3/3/2022

**BOARD OF COOPERATIVE EDUCATIONAL SERVICES
SOLE SUPERVISORY DISTRICT
DELAWARE-CHENANGO-MADISON AND OTSEGO COUNTIES**

**BALLOT FOR SPECIAL ELECTION TO BOARD
OF COOPERATIVE EDUCATIONAL SERVICES**

There are **Three (3)** vacancies on the Board of Cooperative Educational Services to be filled at the annual election to be held on April 20, 2022. The board of education of each component school district, by resolution, may cast one vote for each vacancy to be filled, provided that no more than one vote may be cast for any candidate. No more than one person residing in a particular component school district may be elected to serve on the board of cooperative educational services at one time. The district clerk, or other officer authorized to certify that a board resolution has been adopted, shall complete the ballot by placing an "X" next to the name of the candidate for whom a vote has been cast, and by completing the attached certification. Candidates are in alphabetical order with their address and school district of residence:

1. **Jeanne Shields**
459 Keach Road
Guilford, NY 13780
Bainbridge-Guilford Central School



-
2. **John Klockowski**
155 Thompson Creek Road
Norwich, NY 13815
Norwich City Schools



-
3. **David Cruikshank**
117 Joe Road
North Pitcher, NY 13124
Otselic Valley Central School



TO: Kellie Renwick

FROM: Darryl Beers

RE: Excess of Equipment

DATE: March 30, 2022

I would like to declare the butterfly machine in excess that is located in the Fitness room. This machine is seldom used and is constantly breaking down when it is. We are looking to use that space for a different piece of exercise equipment

Thank you.

Darryl L Beers

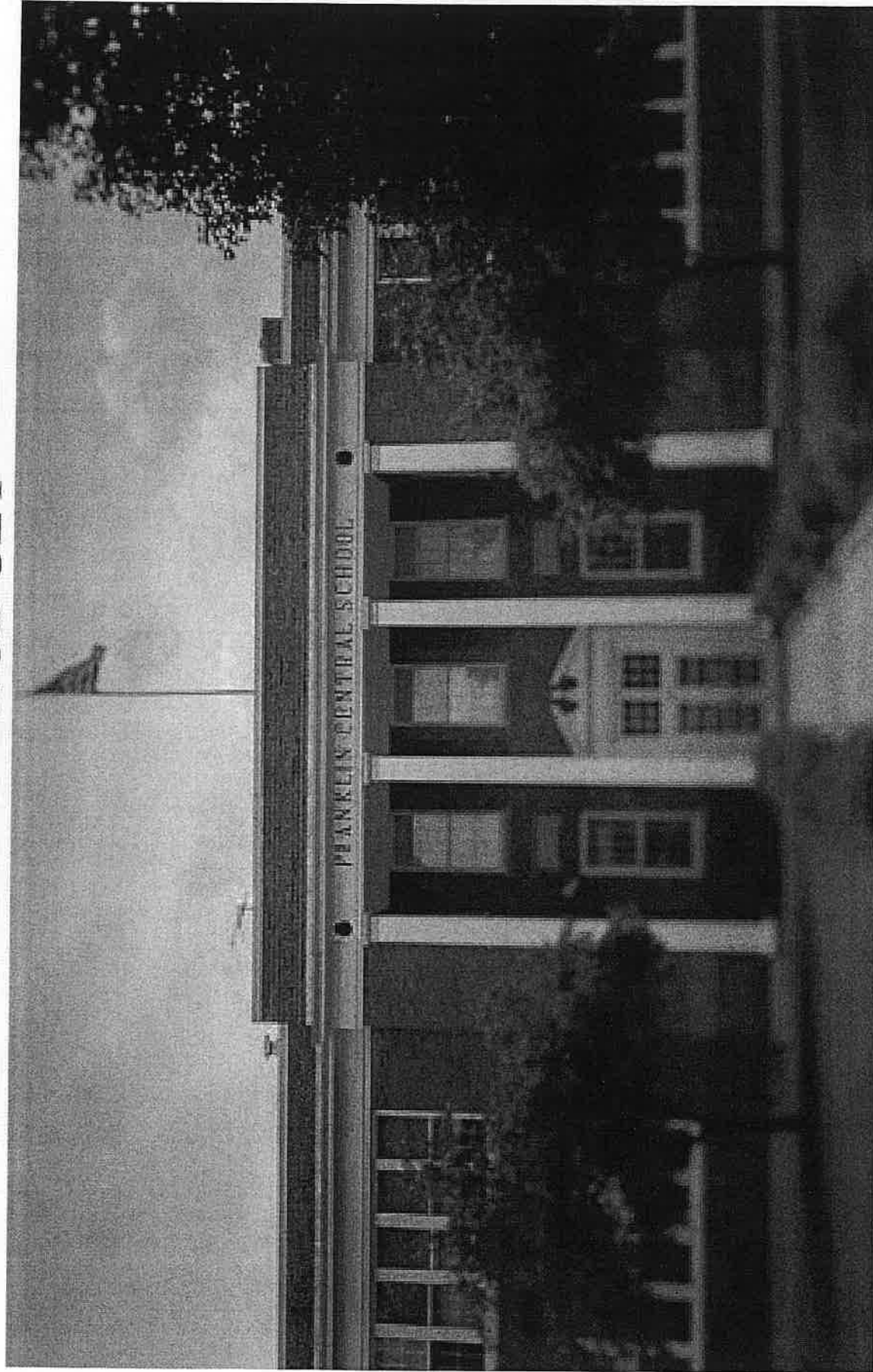
FRANKLIN CSD



001093

FRANKLIN CENTRAL SCHOOL

2022-23 BUDGET



2022-23 Proposed Budget

Proposed budget of \$8,067,691

- Increase spending by \$136,862 or 1.73%
- Significant Budget Increases:
 - Diesel, gasoline & fuel oil
 - Paper products and related supplies
 - Payroll & Benefits
- Increase in state aid of \$89,411

2022-23 Proposed Budget

- Staffing
 - Full-time ELA, Health, Psychologist, Librarian, Elementary AIS & Math
 - Full-day Pre-K program
- Professional development for staff
- Flooring replacements & ventilation upgrades

Estimated Revenues

REVENUE	2021-22 Budget	2022-23 Budget	Amount	Percent
Real Property Taxes	\$2,973,690	\$3,047,140	\$73,450	
Penalties on Taxes	\$12,000	\$12,000	\$0	
Interest	\$1,000	\$1,000	\$0	
Miscellaneous	\$15,000	\$10,000	(\$5,000)	
State Aid	\$4,441,640	\$4,531,051	\$89,411	
Federal Aid - Medicaid	\$2,500	\$1,500	(\$1,000)	
BOCES Refunds	\$40,000	\$40,000	\$0	
Interfund Transfers	\$120,000	\$100,000	(\$20,000)	
Subtotal	\$7,605,830	\$7,742,691	\$136,861	
ERS Reserve	\$100,000	\$100,000	\$0	
Employee Benefits Reserve	\$15,000	\$15,000	\$0	
Unemployment Reserve	\$10,000	\$10,000	\$0	
Appropriated Fund Balance	\$200,000	\$200,000	\$0	
Subtotal	\$325,000	\$325,000	\$0	
Total Revenues	\$7,930,830	\$8,067,691	\$136,861	1.73%

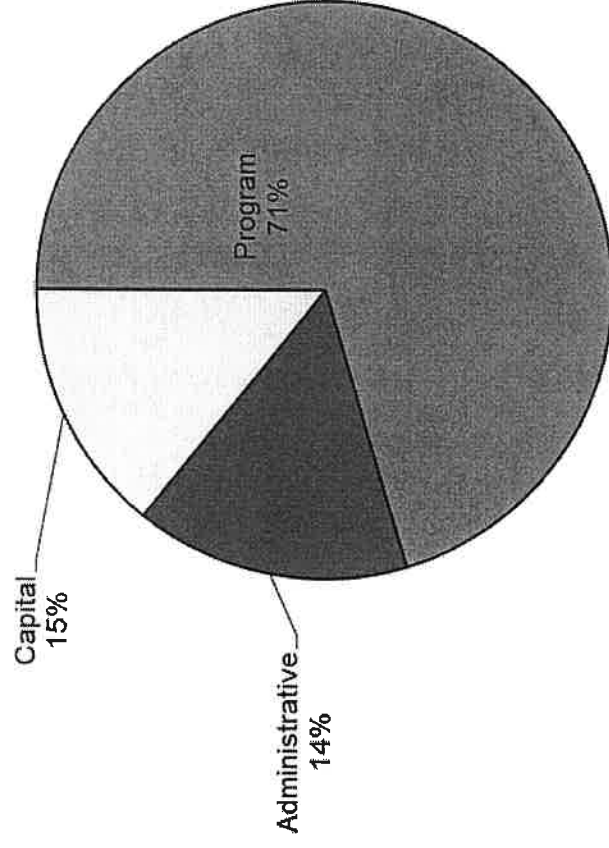
Proposed Expenses

EXPENSES	2021-22	2022-23	Budget Change	
	Budget	Budget	Amount	Percent
PAYROLL	\$3,072,395	\$3,351,887	\$279,492	
BENEFITS	\$1,901,742	\$1,930,893	\$29,151	
BOCES	\$1,412,223	\$1,348,961	(\$63,262)	
DEBT SERVICE	\$803,570	\$586,550	(\$217,020)	
EQUIPMENT	\$29,000	\$29,000	\$0	
CONTRACTUAL EXPENSES	\$379,850	\$403,350	\$23,500	
SUPPLIES	\$175,350	\$175,350	\$0	
COMPUTER SOFTWARE	\$11,700	\$11,700	\$0	
TUITION	\$0	\$75,000	\$75,000	
TEXTBOOKS	\$25,000	\$25,000	\$0	
SUBTOTAL	\$7,810,830	\$7,937,691	\$126,861	
CAFETERIA SUBSIDY	\$20,000	\$30,000	\$10,000	
TRANSFER TO CAPITAL PROJEC	\$100,000	\$100,000	\$0	
TOTAL EXPENDITURES	\$7,930,830	\$8,067,691	\$136,861	1.73%

Three Part Budget

	2021-22	2022-23	Budget Change	
Component	Budget	Budget	Amount	Percent
Administrative	\$1,113,277	\$1,150,130	\$36,853	3.31%
Program	\$5,432,054	\$5,736,345	\$304,291	5.60%
Capital	\$1,385,499	\$1,181,216	(\$204,283)	-14.74%
Total	\$7,930,830	\$8,067,691	\$136,861	1.73%

2022-23 Proposed Expenditures



Effect on Taxes

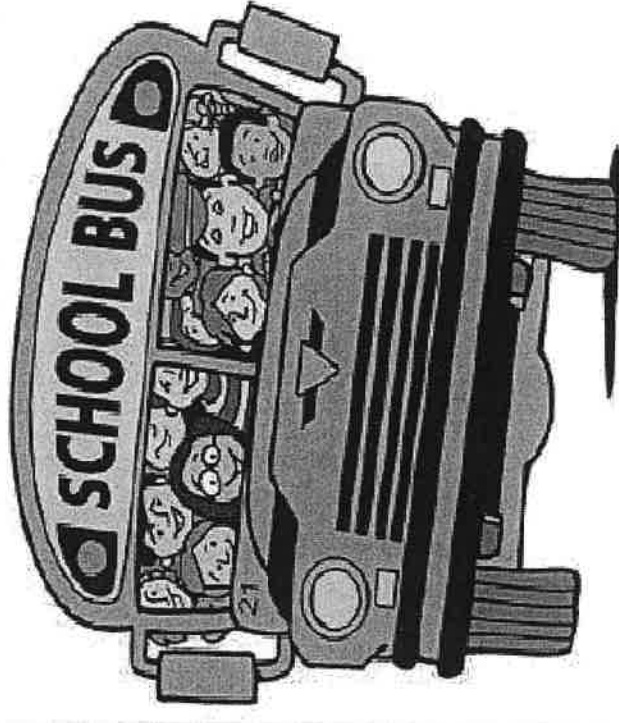
- Proposed Tax Levy increase of 2.47%
 - Equivalent to tax cap
- Increase on 100K property is \$39
- Estimated STAR reduction
 - \$421 Basic STAR
 - \$827 Enhanced STAR

Bus Proposition

- Purchase one 48 passenger bus at a cost not to exceed \$130,000
- Replacement cycle contains maintenance and repairs costs
- Purchase is 70% state-aid

reimbursable; net cost to the

District is \$39,500



Capital Reserve Proposition

- Seeking authorization to establish a new capital reserve fund
 - Last one established in 2014, and used for large-scale project completed 2019-2021
- Mechanism to save money for future projects
- Limits the need for debt
- Reduces cost to taxpayers

Contingency Budget

- Results in \$73,450 reduction to proposed budget
- Will also require the elimination of one or more:
 - Educational programming and/or staffing
 - Extra-curricular Activities
 - Athletics
- Can not allow community groups to use buildings and/or grounds without charging a fee to that organization

QUESTIONS?